

## PACKAGE LEAFLET: INFORMATION FOR THE USER

# Evorel<sup>®</sup>

## Estradiol

Evorel is a registered trademark

**Read all of this leaflet carefully before you start using this medicine because it contains important information for you.**

- Keep this leaflet. You may need to read it again
- If you have any further questions, ask your doctor or pharmacist
- This medicine has been prescribed for you only. Do not pass it on to others. It may harm them, even if their signs of illness are the same as yours
- If you get any side effects talk to your doctor or pharmacist. This includes any possible side effects not listed in this leaflet. See section 5.

### **What is in this leaflet**

1. What Evorel is and what it is used for
2. What you need to know before you use Evorel
3. Safety of HRT
4. How to use Evorel
5. Possible side effects
6. How to store Evorel
7. Contents of the pack and other information

### **What Evorel is and what it is used for**

The name of your medicine is Evorel. It belongs to a group of medicines called hormone replacement therapy (HRT).

Evorel contains an oestrogen (estradiol) which is a female hormone. It comes in 4 different sizes: Evorel 25, Evorel 50, Evorel 75 and Evorel 100.

Evorel comes in a 'memory pack'. This can be used to help you remember when to change your patches. Each pack contains eight patches. Evorel 50 also comes in packs of two and twenty-four patches.

The hormone is spread evenly in each patch. It passes slowly into your body through the skin.

### **Evorel is used for**

- The symptoms of the menopause (see 'What is the menopause?')

### **Evorel 50, 75 and 100 can also be used to**

- Prevent osteoporosis (fragile bones) in women who have had the menopause and are most likely to have bone problems. Evorel 50, 75 and 100 are only used if other medicines for osteoporosis have been tried first and they have not worked.

### **What is the menopause?**

Women produce oestrogen hormones from their ovaries throughout their adult life. These hormones are important in sexual development and control of the menstrual cycle.

The menopause happens when the level of hormones produced by the ovaries goes down. This is a gradual process. During this time the levels of oestrogen can go up and down. This can cause:

- Hot flushes, night sweats or mood swings
- Vaginal problems such as dryness or itching
- Uncomfortable or painful sexual intercourse

You may get the same symptoms if you have had your ovaries taken out in an operation.

### **How Evorel works**

Evorel patches replace the oestrogen that is normally released by the ovaries. However, in women who still have a womb, taking an oestrogen hormone regularly may cause the lining of your womb to build up and get thicker.

- This means it is necessary to add a progestogen hormone to the oestrogen
- This helps shed the lining of the womb and stop any problems happening

Evorel is not a contraceptive.

## **What you need to know before you use Evorel**

### **Do not use Evorel if:**

- You are allergic to anything in the patches (listed in section 7)
- You have (or have ever had) or think you may have breast cancer
- You have (or are suspected of having) or ever had a cancer that is made worse by oestrogens (such as endometrial cancer)
- You have a **thickening of the lining of the womb** which has not been treated
- You have vaginal bleeding you cannot explain
- You have ever had blood clots in a vein (thrombosis) or a blood clot that has travelled to your lung (pulmonary embolism)
- You have problems with your blood which increases the likelihood of developing a blood clot (thrombosis) (such as protein C, protein S or antithrombin deficiency)
- You have (or have ever had) a liver disease and your liver function tests have not returned to normal
- You have ever had blocked arteries (arterial thrombo-embolic disease) that gave you angina or a heart attack or resulted in a stroke
- You have a blood problem called 'porphyria'

Do not use this medicine if any of the above applies to you. If you are not sure, talk to your doctor or pharmacist before using Evorel.

Stop using Evorel at once if any of the above appears for the first time and talk to your doctor immediately.

Evorel should not be used by children.

### **Medical check-ups**

Before taking HRT, your doctor should ask about you and your family's medical history. Your doctor may decide to examine your breasts or your tummy, and may do an internal examination. They will only do this if it is necessary for you, or if you have any special concerns.

Once you have started on HRT, see your doctor for regular check-ups (at least once a year). At these check-ups, your doctor may discuss the benefits and risks of continuing to take HRT.

### **Make sure that you:**

- Go for regular breast screening and cervical smear tests
- Regularly check your breasts for any changes such as dimpling of the skin, changes in the nipple, or any lumps you can see or feel

### **Tell your doctor if you have ever had any of the following. You may need these checks more often.**

- A problem caused by growth of the womb lining
  - Inside the womb (fibroids)
  - Outside the womb (endometriosis)
  - Thickening of the lining of the womb (endometrial hyperplasia)
- Increased risk of blood clots (see 'Blood clots' in section 3 below)
- A family history of increased risk of cancers related to oestrogens (see 'Breast cancer' in section 3 below)
- High blood pressure (hypertension). Your doctor may tell you to stop using Evorel if your blood pressure goes up
- Diabetes
- Gallstones
- Migraine or severe headaches
- Systemic Lupus Erythematosus (SLE). This is an allergic condition that causes joint pain, skin rashes and fever
- Epilepsy
- Asthma
- A disease affecting the eardrum (otosclerosis)
- Liver, heart or kidney problems
- High levels of fat (triglycerides) in your blood, as you may have a higher risk of pancreatitis (inflammation of the pancreas, which causes severe pain in the abdomen and back)
- Any breast problems
- History of sudden swelling of the face or throat, which may cause difficulty in swallowing or breathing, rapid swelling of the hands and feet and, stomach cramps

You may still be able to use Evorel, but you should discuss this with your doctor first. Also tell your doctor if these illnesses return or get worse while you are using Evorel.

If you have had a premature menopause the risk of using HRT may be different. Talk to your doctor about the risks.

### **Other conditions**

- If you have **brown patches on your face or body** (chloasma) or have a history of them, you may need to keep out of the sun or away from sunbeds (these patches may not completely disappear again)

### **Other medicines and Evorel**

Tell your doctor or pharmacist if you are taking, have recently taken or might take any other medicines. This includes medicines that you buy without a prescription or herbal medicines.

#### **In particular, tell your doctor or pharmacist if you are taking any of the following:**

- Medicines for epilepsy such as phenobarbital, phenytoin or carbamazepine
- Certain medicines for infections such as rifampicin, rifabutin, nevirapine, efavirenz, ritonavir or nelfinavir
- Bosentan - for high blood pressure in the blood vessels of the lungs
- St. John's Wort - for depression

Taking these medicines with Evorel can stop it from working as well. Because of this you may get some bleeding, like a period, when you are not expecting it.

- A medicine for epilepsy called lamotrigine. Using Evorel with lamotrigine could affect control of your epilepsy

### **Operations or tests**

Tell your doctor if you are going to have surgery. You may need to stop taking HRT about 4 to 6 weeks before the operation to reduce the risk of a blood clot. Your doctor will tell you when you can start taking HRT again.

If you visit a hospital or your family doctor for a blood or urine test, tell them that you are taking Evorel. This is because this medicine may affect the results of the tests.

### **Pregnancy and breast-feeding**

Do not use this medicine if you are pregnant, think you may be pregnant or might become pregnant. This is because it may affect the baby.

If you become pregnant, contact your doctor straight away and remove the patch.

Do not use this medicine if you are breast-feeding.

Ask your doctor or pharmacist for advice before taking any medicine if you are pregnant or breast-feeding.

### **Driving or using machines**

There is no information about whether Evorel affects your ability to drive or use machines. See how this medicine affects you before you drive or use any tools or machines.

## **Safety of HRT**

As well as benefits, HRT has some risks. Consider the following when deciding to take or continue HRT.

## Heart disease

HRT is **not recommended** for women who have had heart disease recently. If you have ever had heart disease, talk to your doctor to see if you should be taking HRT.

### HRT will not help to prevent heart disease.

Studies of HRT (containing both oestrogen and progestogen) have shown that women may be slightly more likely to get heart disease.

If you get a **pain in your chest** that spreads to your arm and neck

- **See a doctor as soon as possible**
- **Do not take any more HRT** until your doctor says you can

This pain may be a sign of heart disease.

## Stroke

Research suggests that HRT slightly increases the risk of having a stroke.

Other things that can increase the risk of stroke include:

- Getting older
- High blood pressure
- Smoking
- Drinking too much alcohol
- An irregular heartbeat

If you are worried about any of these things, or if you have had a stroke in the past, talk to your doctor to see if you should take HRT.

### How likely is a stroke?

Looking at women in their **50s**, on average, over 5 years:

- In women **not taking HRT** - **3 in 1000** would be expected to have a stroke
- In women **taking HRT** - **4 in 1000** would be expected to have a stroke

Looking at women in their **60s**, on average, over 5 years:

- In women **not taking HRT** - **11 in 1000** would be expected to have a stroke
- In women **taking HRT** - **15 in 1000** would be expected to have a stroke

If you get **migraine-type headaches** which you cannot explain

- **See a doctor as soon as possible**
- **Do not take any more HRT** until your doctor says you can

These headaches may be an early warning sign of a stroke.

## Blood clots

HRT may increase the risk of blood clots in the veins (also called deep vein thrombosis, or DVT), especially during the first year of taking it.

These blood clots are not always serious. However, if a clot travels to the lungs, it can cause chest pain, breathlessness, collapse or even death. This is called pulmonary embolism, or PE.

You are more likely to get a blood clot if:

- You are very overweight (BMI above 30 kg/m<sup>2</sup>)
- You have had a blood clot before
- You are taking medicine containing an oestrogen

- You are getting older
- You have cancer
- You have just had a baby
- Any of your close family have had blood clots
- You have had one or more miscarriages
- You have any blood clotting problem that needs treatment with a medicine such as warfarin
- You are off your feet for a long time because of major surgery, injury or illness
- You are going on a long journey and will not be moving about for some time
- You have a rare illness called SLE (Systemic Lupus Erythematosus)

If any of these things apply to you, talk to your doctor to see if you should take HRT.

### **How likely is a blood clot?**

Looking at women in their **50s**, on average, over 5 years:

- In women **not taking HRT - 3 in 1000** would be expected to get a blood clot
- In women **taking HRT - 7 in 1000** would be expected to get a blood clot

Looking at women in their **60s**, on average, over 5 years:

- In women **not taking HRT - 8 in 1000** would be expected to get a blood clot
- In women **taking HRT - 17 in 1000** would be expected to get a blood clot

If you get painful swelling in your leg, sudden chest pain or have difficulty breathing

- **See a doctor as soon as possible**
- **Do not take any more HRT** until your doctor says you can

These may be signs of a blood clot.

### **Breast cancer**

**Women who have breast cancer, or have had breast cancer in the past, should not take HRT.**

Taking HRT slightly increases the risk of breast cancer. The risk is also slightly increased if you have a later menopause.

- Postmenopausal women taking oestrogen-only HRT for 5 years - the risk is about the same as for a woman of the same age who is still having periods over that time, and not taking HRT
- Women taking oestrogen plus progestogen HRT - the risk is higher than for oestrogen-only HRT. However, oestrogen plus progestogen HRT is beneficial for the endometrium (see 'Endometrial cancer')

For all kinds of HRT, the extra risk of breast cancer goes up the longer you take it. However, it returns to normal within about 5 years after stopping HRT.

Your risk of breast cancer is also higher if:

- You have a close relative (mother, sister or grandmother) who has had breast cancer

- You are very overweight

### **How likely is breast cancer?**

Looking at women aged 50 to 79, on average, over the next 5 years:

- In women **not taking combined HRT between 9 and 17 in 1000** will get breast cancer
- In women **taking oestrogen-progestogen HRT** at age 50 to 79 and take it for **5 years**, between **15 and 21 in 1000** will get breast cancer (an **extra 4-6 cases**)

If you notice any **changes in your breast**, such as:

- Dimpling of the skin
- Changes in the nipple
- Any lumps you can see or feel

**Make an appointment to see your doctor** as soon as possible.

### **Endometrial cancer (cancer of the lining of the womb)**

**Taking oestrogen-only HRT for a long time can increase the risk of cancer of the lining of the womb** (the endometrium). Taking a **progestogen** as well as the oestrogen helps to lower the extra risk.

**If you still have your womb**, your doctor will usually prescribe a progestogen as well as oestrogen. These may be prescribed separately, or as a combined HRT product.

**If you have had your womb removed** (a hysterectomy), your doctor will discuss with you whether you can safely take oestrogen without a progestogen.

**If you have had your womb removed because of endometriosis**, any endometrium left in your body may be at risk of cancer. This means your doctor may prescribe HRT that includes a progestogen as well as an oestrogen.

Your product, Evorel, is an oestrogen-only HRT.

### **How likely is endometrial cancer?**

Looking at women aged 50 who still have a womb, on average, over the next 15 years:

- In women **not taking HRT - 5 in 1000** will get endometrial cancer
- In women **taking oestrogen-only HRT**, the number will be **2 to 12 times higher**, depending on the dose and how long you take it for

The addition of a progestogen to oestrogen-only HRT substantially reduces the risk of endometrial cancer.

**If you get breakthrough bleeding or spotting**, it is usually nothing to worry about, especially during the first few months of taking HRT.

### **But if the bleeding or spotting:**

- Carries on for more than the first few months
- Starts after you have been on HRT for a while
- Carries on even after you've stopped taking HRT

**Make an appointment to see your doctor as soon as possible.** It could be a sign that your endometrium has become thicker.

## Ovarian cancer

Ovarian cancer (cancer of the ovaries) is rare, much rarer than breast cancer. The use of oestrogen-only or combined oestrogen-progestogen HRT has been associated with a slightly increased risk of ovarian cancer.

The risk of ovarian cancer varies with age. For example, in women aged 50 to 54 who are not taking HRT, about 2 women in 2000 will be diagnosed with ovarian cancer over a 5-year period. For women who have been taking HRT for 5 years, there will be about 3 cases per 2000 users (i.e. about 1 extra case).

## Dementia

Evorel and medicines like it will not stop memory loss (dementia). Women who start using medicines like Evorel after the age of 65 may have a small increase in the risk of dementia.

## How to use Evorel

Always use Evorel exactly as your doctor has told you. You should check with your doctor or pharmacist if you are not sure. Evorel patches are available in 4 different sizes: Evorel 25, Evorel 50, Evorel 75 and Evorel 100. These contain different amounts of the oestrogen hormone, estradiol. Your doctor will aim to reduce your symptoms with the lowest possible dose for the shortest amount of time.

The highest dose you should have is 100 micrograms of estradiol in a day. This is the amount delivered by an Evorel 100 patch each day.

### When to start using Evorel

#### **You may put an Evorel patch on at any time if:**

- You have not used HRT before your menopause and no longer have menstrual periods
- Your menstrual cycles are not regular and you are not pregnant
- You are changing from HRT that does not give you a withdrawal bleed

#### **Put an Evorel patch on within 5 days of the start of bleeding if:**

- You are not currently using HRT and still having regular periods

#### **Put an Evorel patch on at the end of a treatment cycle or one week after you finish using another HRT product if:**

- You are changing from an HRT medicine that gives you a withdrawal bleed

#### **If you are using another type of HRT:**

- The day you start will depend on the type of HRT you have been using. Talk to your doctor if you are not sure which type of HRT you are using.

### Using the patches

The patches need to be changed twice a week.

Start a new pack of Evorel as soon as you finish one. Do not leave a break between packs.

### Changing your patches

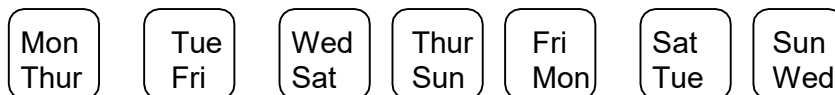
- You must change the patches twice a week to give your body a steady supply of hormones. There is enough hormone in each patch to last for several days
- Change your patch on the same two days every week. This will mean that one patch is on for three days and the next patch for four days
- For example, if you apply your first patch on a Monday, change it on Thursday and again on the following Monday. You can work out your two days from the following table, starting from the first day of use:

#### If you put your

#### first patch on:

Monday	→	Change on:	&	Change again on:
Monday	→	Thursday	&	Monday
Tuesday	→	Friday	&	Tuesday
Wednesday	→	Saturday	&	Wednesday
Thursday	→	Sunday	&	Thursday
Friday	→	Monday	&	Friday
Saturday	→	Tuesday	&	Saturday
Sunday	→	Wednesday	&	Sunday

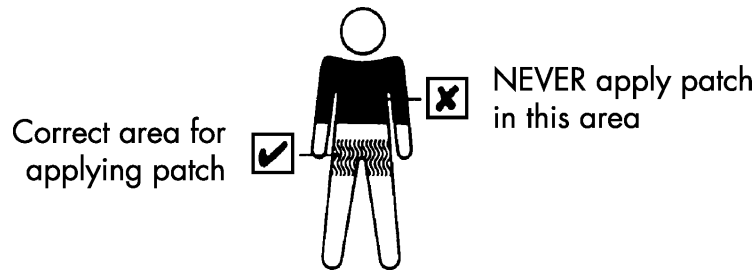
To help you remember your two “patch change” days, mark them here or on the pack. They are written on the pack like this:



### Where to apply the patch

Stick the patch onto a hairless area of skin below the waist. Most women prefer to wear the patch on the thigh or bottom.

- Do not apply on or near the breasts
- Do not put it on top of cuts, spots or anywhere the skin is irritated
- Do not use cream, moisturiser or talc before applying the patch
- Do not apply the patch on the same area of skin twice in a row
- It can be worn under loose areas of clothing.
- Do not wear a patch under elasticated areas or a tight waistband
- Apply the patch to clean, dry, cool skin as soon as you open the protective pouch



### Putting a patch on

Do not use a patch if its protective pouch is already open.

#### Step 1: Open and Peel

- Using the notches as a guide, tear along two edges of the pouch. Remove the patch
- With the protective backing facing you, bend and peel off half the backing. Don't touch the sticky side - it may not stick properly



#### Step 2: Apply and Press

- Apply the open half of the patch to your skin
- Remove the remaining backing and press down the rest of the patch
- Press the patch with the palm of your hand to make sure it is firmly stuck



### Removing a patch

- Peel an edge of the patch smoothly away from the skin
- Fold the patch in half, so that the sticky side sticks to itself
- Put it in with the household rubbish, safely out of the reach of children and pets
- Do not flush used patches down the toilet



When you remove the patch some glue may remain on your skin. It will disappear with time, or you can use baby oil to remove it.

### If a patch falls off

Apply a new patch but keep to your original 'patch change' days. If you have just had a bath or shower, wait until your skin cools before applying a new patch.

Talk to your doctor if you need more patches.

### If you forget to change the patch

Change it as soon as you remember and then keep to your original 'patch change' days. You may get some bleeding and spotting like a period during this time.

### **If you use more Evorel than you should**

It is unlikely that you will have too much of the hormones in Evorel. The most common symptoms of having too much oestrogen in your body are:

- Tender or painful breasts
- Feeling sick (nausea) or being sick
- Unexpected vaginal bleeding
- Stomach pain or bloating

Removing the patch can reverse the effects of too much oestrogen. Talk to your doctor or pharmacist before using any more patches. Your doctor may decide to change the size of patch.

### **Contraception while using Evorel**

The levels of hormone from the patches are too low to act as a contraceptive. Use non-hormonal contraceptive methods (such as a condom, diaphragm or coil) until your periods have completely stopped.

### **Everyday activities**

- You can have a bath or shower as normal. Do not scrub too hard as this can loosen the edges of the patch
- You can go swimming. The patch will not be affected
- You can exercise and play sports. However, do not wear the patch under tight clothing or waist bands
- You can sunbathe. However, keep the patch covered, out of direct sunlight

If you have any further questions on the use of this product, ask your doctor or pharmacist.

## **Possible side effects**

Like all medicines, Evorel can cause side effects, although not everybody gets them. Side effects may happen more often with the larger size patches. Some side effects may be due to any progestogen that is being taken at the same time.

The following diseases are reported more often in women using HRT compared to women not using HRT:

- breast cancer;
- abnormal growth or cancer of the lining of the womb (endometrial hyperplasia or cancer);
- ovarian cancer;
- blood clots in the veins of the legs or lungs (venous thromboembolism);
- heart disease;
- stroke;
- probable memory loss if HRT is started over the age of 65;

For more information about these side effects, see Section 3.

**Take off the patch and tell your doctor straight away if you notice or suspect any of the following. You may need urgent medical treatment.**

- Sudden swelling of the face or throat which may cause difficulty in swallowing or breathing. This may be a sign of an allergic reaction. This only happens in a small number of people

- Blood clots (thrombosis), a heart attack or stroke
- Yellowing of the skin or whites of the eyes (jaundice), or other liver problems
- Migraine-type headaches for the first time or more frequent (affects less than 1 in 10 people)
- An increase in blood pressure
- Breast or ovarian cancer, endometrial cancer or hyperplasia (long, heavy or irregular vaginal bleeding)
- Convulsions or fits (frequency not known)

**Tell your doctor if you notice any of the following side effects while using Evorel:**

**Very common** (affects more than 1 in 10 people)

- Irritated, itchy skin and rash where the patch is applied

**Common** (affects less than 1 in 10 people)

- Red, puffy skin where the patch is applied
- Breast pain
- Rash or feeling itchy
- Feeling dizzy
- Feeling depressed
- Headache
- Feeling sick or having stomach pains
- Diarrhoea
- Pain, including pain in joints
- Break through bleeding, spotting or periods
- Weight gain

**Uncommon** (affects less than 1 in 100 people)

- Vaginal thrush
- Wind
- Being aware of your heart beat (palpitations)
- Fuller breasts
- Painful periods
- Swelling of hands and feet (peripheral oedema)
- Water retention or build-up of fluid under the skin (oedema)
- Muscle pain
- Allergic reactions (hypersensitivity)

**Rare** (affects less than 1 in 1,000 people)

- Bloating feeling
- Gallstones

**The following side effects have been reported with other HRTs:**

**Common** (affects less than 1 in 10 people)

- Weight decrease
- Feeling sick

**Uncommon** (affects less than 1 in 100 people)

- Problems with sight
- Indigestion
- Painful reddish skin nodules (erythema nodosum)
- Tender breasts

**Rare** (affects less than 1 in 1,000 people)

- Feeling anxious
- Increase or loss in sex drive
- Being sick
- Contact lenses may feel uncomfortable
- Excess hair growth
- Acne
- Muscle cramps
- Discharge from the vagina, premenstrual syndrome (PMS)
- Feeling tired

**The following side effects have been reported in association with oestrogen/progestogen treatment**

- Gall bladder disease
- Brown patches on your face or body (chloasma)
- Rash with target -shaped reddening or sores (erythema multiforme)
- Bruising on the legs
- Loss of memory (Dementia) (see section 3)

#### **Reporting of side effects**

If you get any side effects, talk to your doctor, pharmacist or nurse. This includes any possible side effects not listed in this leaflet. You can also report side effects directly via the Yellow Card Scheme at: [www.mhra.gov.uk/yellowcard](http://www.mhra.gov.uk/yellowcard). By reporting side effects you can help provide more information on the safety of this medicine.

#### **How to store Evorel**

Keep this medicine out of the sight and reach of children. Do not store above 25°C. Keep in the original pouch and carton.

Do not use Evorel after the expiry date which is stated on the label. The expiry date refers to the last day of that month.

Do not use a patch if the protective pouch is already open.

#### **Contents of the pack and other information**

**The active substance** in Evorel is estradiol.

Evorel 25 contains 1.6 mg estradiol and delivers 25 micrograms of estradiol a day

Evorel 50 contains 3.2 mg estradiol and delivers 50 micrograms of estradiol a day

Evorel 75 contains 4.8 mg estradiol and delivers 75 micrograms of estradiol a day

Evorel 100 contains 6.4 mg estradiol and delivers 100 micrograms of estradiol a day

**The other ingredients** are Duro-Tak 387-2287 (this makes the patches sticky), guar gum and Hostaphan MN19 (backing film).

**What Evorel looks like and contents of the pack**

Evorel comes in a memory pack containing eight patches.

Evorel 50 also comes in packs of two and twenty four patches.

Evorel 25 is marked CE25 and has a surface area of 8 sq cm

Evorel 50 is marked CE50 and has a surface area of 16 sq cm

Evorel 75 is marked CE75 and has a surface area of 24 sq cm

Evorel 100 is marked CE100 and has a surface area of 32 sq cm

The patches are square with rounded corners. They are clear with a sticky backing that can be stuck to the skin. Each patch comes in a protective sealed pouch.

**The product licence is held by:**

Theramex HQ UK LTD, Sloane Square House, 1 Holbein Place,  
London SW1W 8NS, UK

**Evorel is made by:**

Aesica Pharmaceuticals GmbH  
Alfred-Nobel-Str. 10  
40789 Monheim am Rhein  
Germany

**For information in large print, tape, CD or Braille, telephone  
0800 198 5000.**

This leaflet was last revised in November 2019.